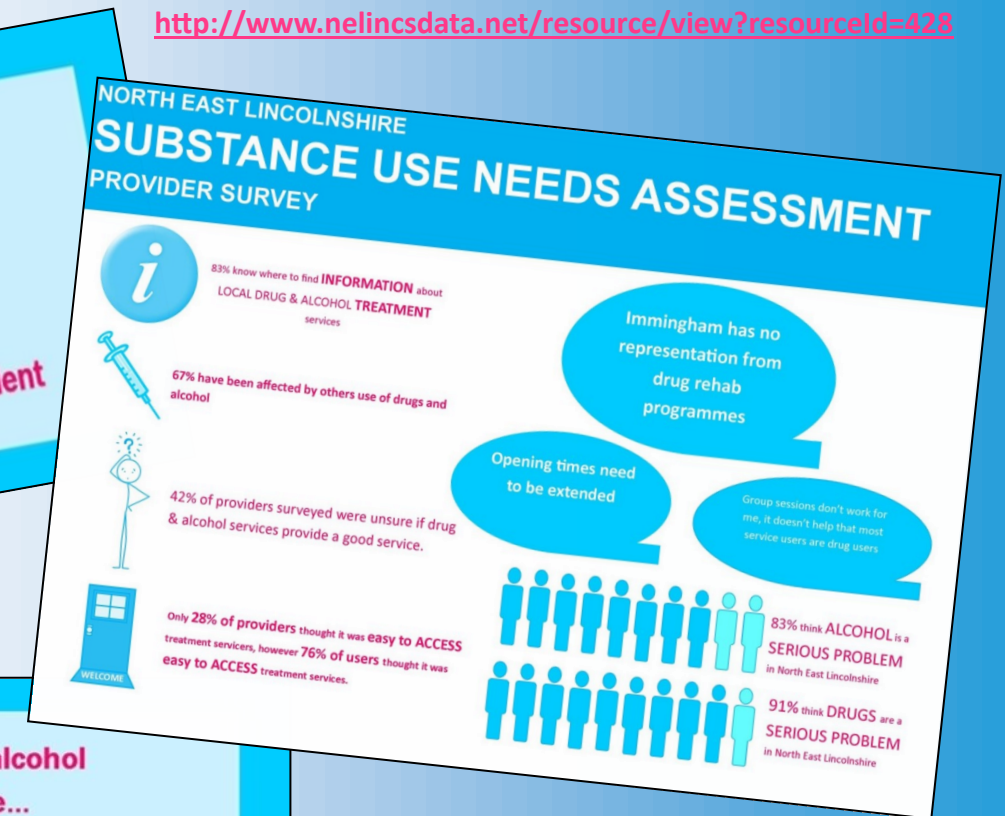
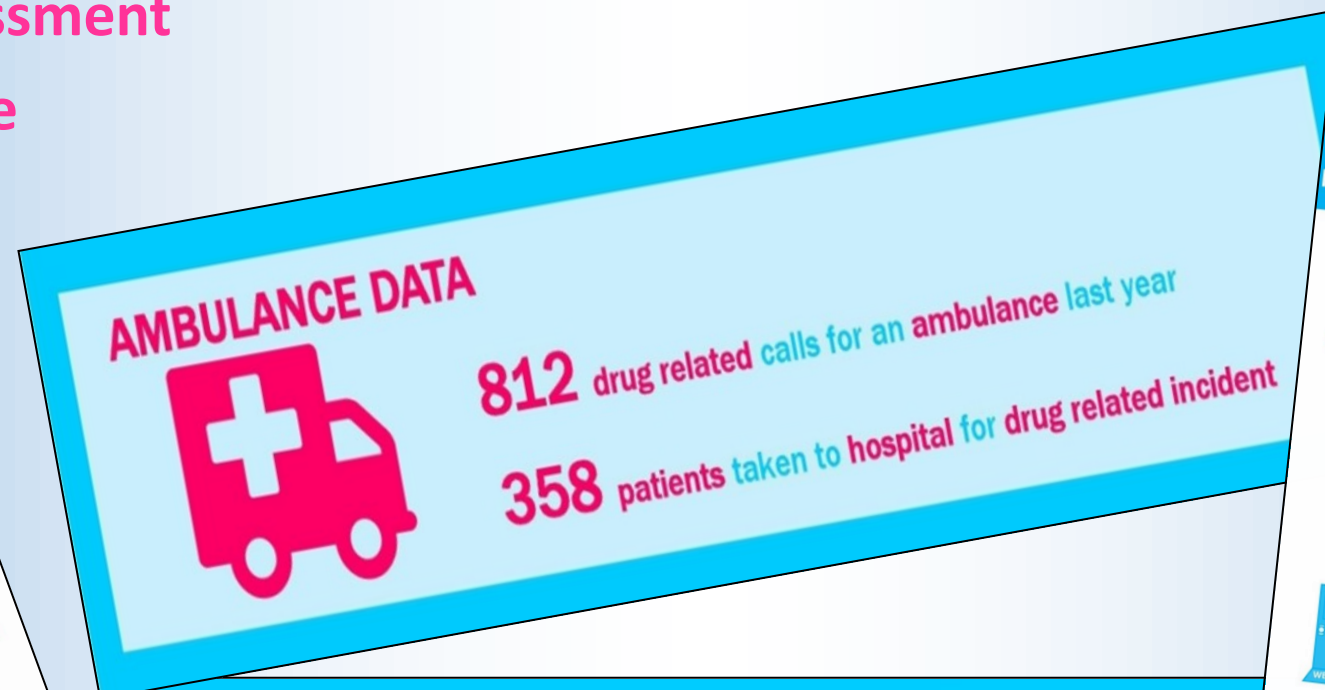
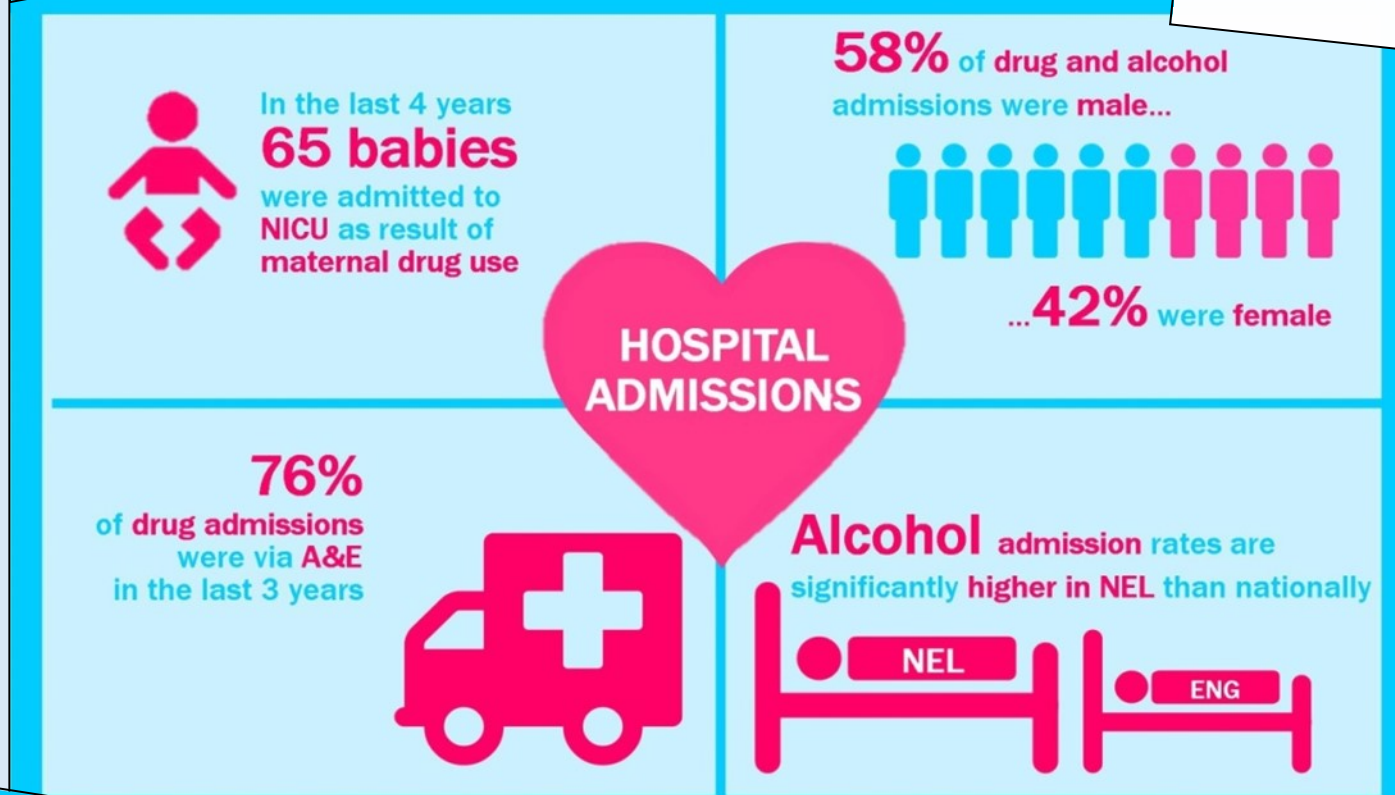


Substance Misuse Needs Assessment in North East Lincolnshire

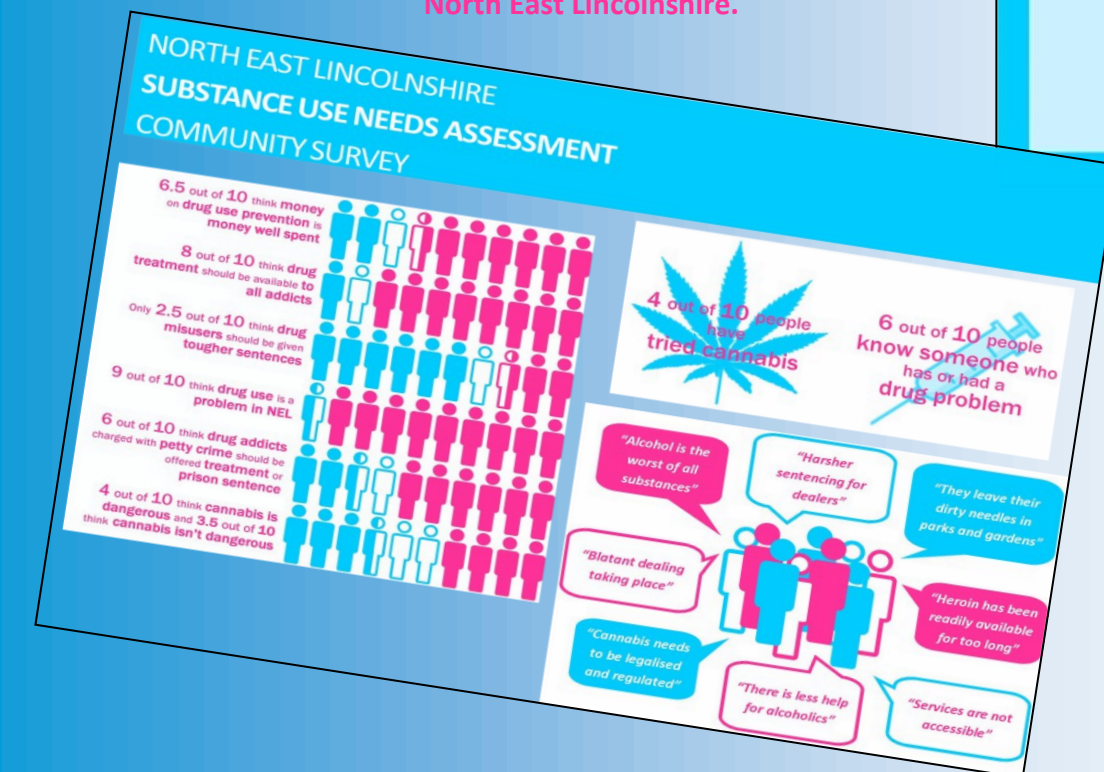
<http://www.nelincsdata.net/resource/view?resourceId=428>



The NEL substance misuse needs assessment was compiled using a variety of local and national data sets and information sources, to assess the impact of substance misuse in the borough, and to evaluate current specialist substance misuse service provision and recovery services within North East Lincolnshire.



As part of the needs assessment process, three surveys were carried out from individuals accessing treatment services, partner agencies who work alongside treatment agencies and the general public to ascertain their views in respect of drug and alcohol misuse in North East Lincolnshire.



Areas covered by the Recommendations

1. Provision of services
2. Data
3. Early intervention/prevention
4. Population level
5. Partnership working
6. Outcome measures
7. Future projects

