

The logo for Citizens Advice, featuring the words "citizens advice" in white lowercase letters inside a blue speech bubble shape.

**citizens
advice**

Citizens Advice in Yorkshire and the Humber: Issues dealt with in person, by telephone, email or web chat (November 2019 – October 2021)

November 2021

Purpose of this slide set

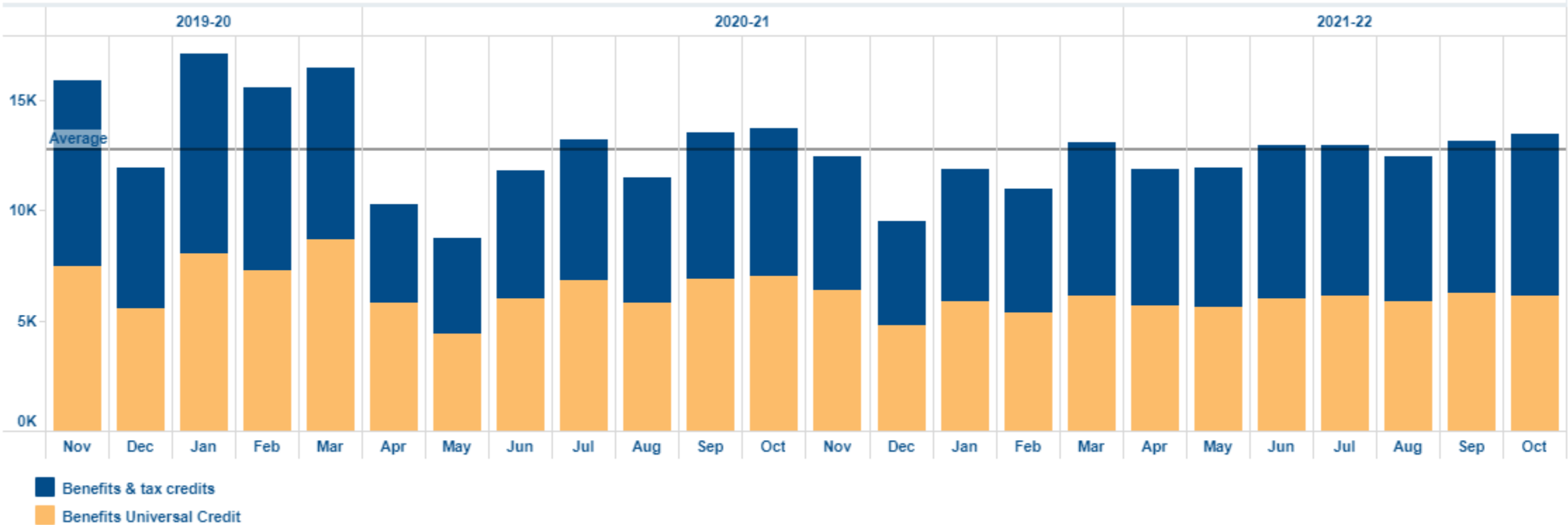
Purpose:

- The purpose of this slide set is to provide a 'snapshot' of real-time data that captures the social and economic impacts of the coronavirus pandemic in local communities.
- This data should be set alongside DWP claimant count, Universal credit claims and furlough data to consider the direction of travel, the potential impact on people's mental health locally, to encourage collaboration with Citizens Advice and other key partners and contribute to the development and delivery of services as the coronavirus control measures ease and economic support and measures draw to a close.

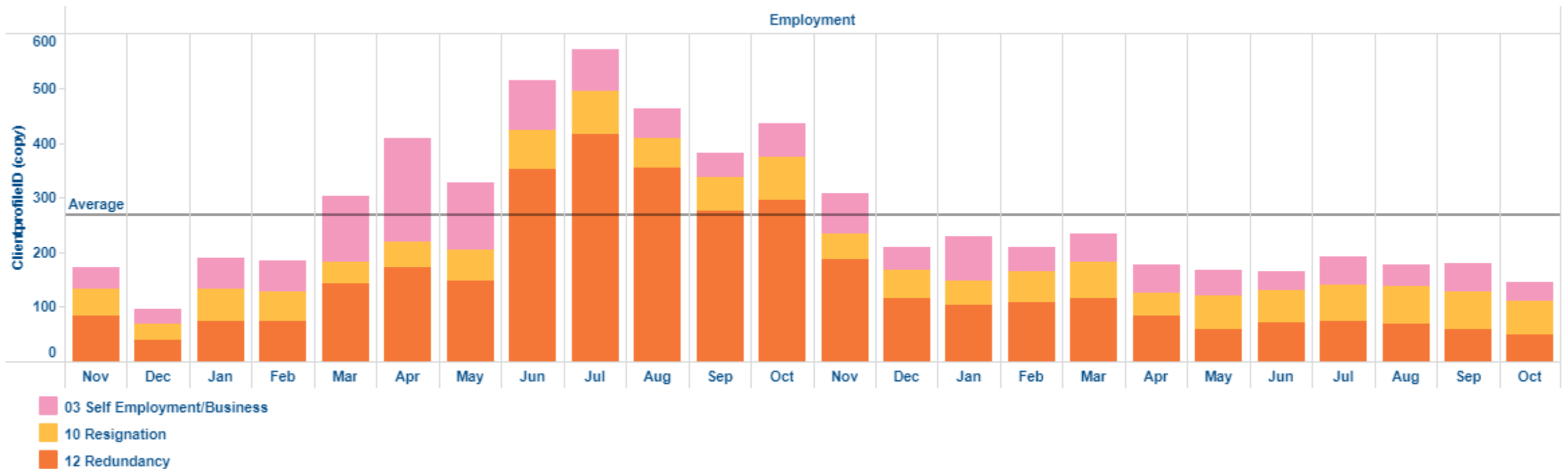
Data sets:

- Benefits (Income Support, Jobseekers Allowance and other benefits issues) and Universal Credit
- Employment including Self Employment, Redundancy
- Debt, Financial Services and capability and Legal
- Relationship and Family including Divorce, Separation, dissolution, Children and Bereavement
- Housing including Homelessness, access and provision of accommodation and Housing associations
- Food banks
- Mental Health services

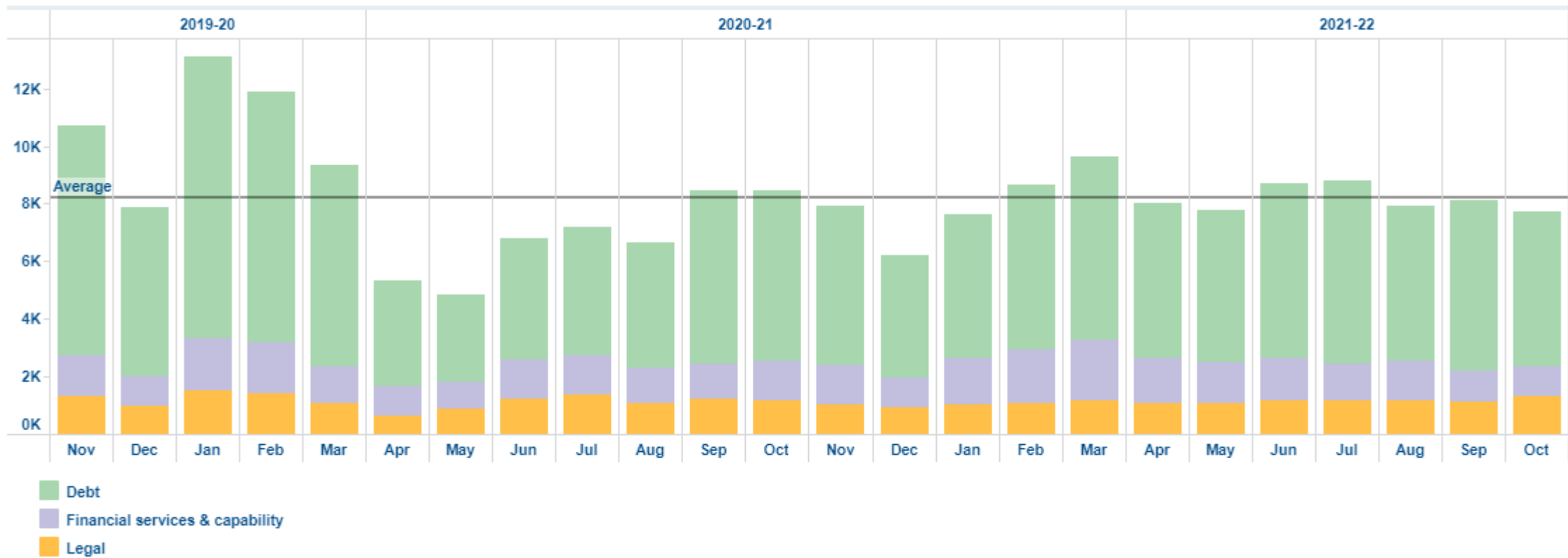
Benefits (Income Support, Jobseekers Allowance and other benefits issues) and Universal Credit



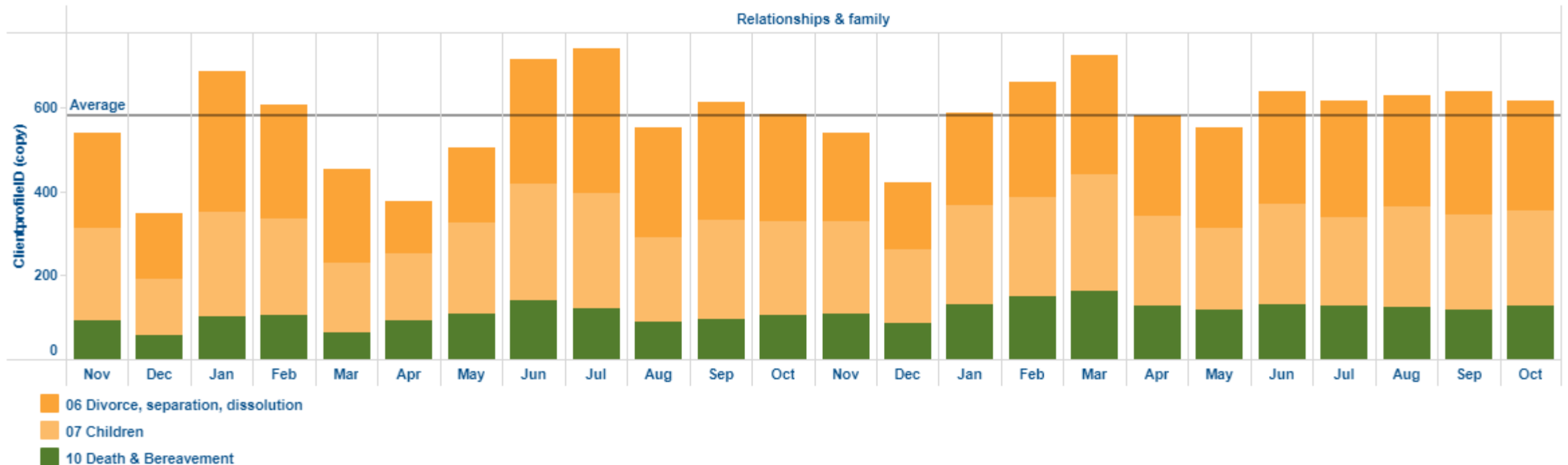
Employment including Self Employment, Redundancy and Resignation



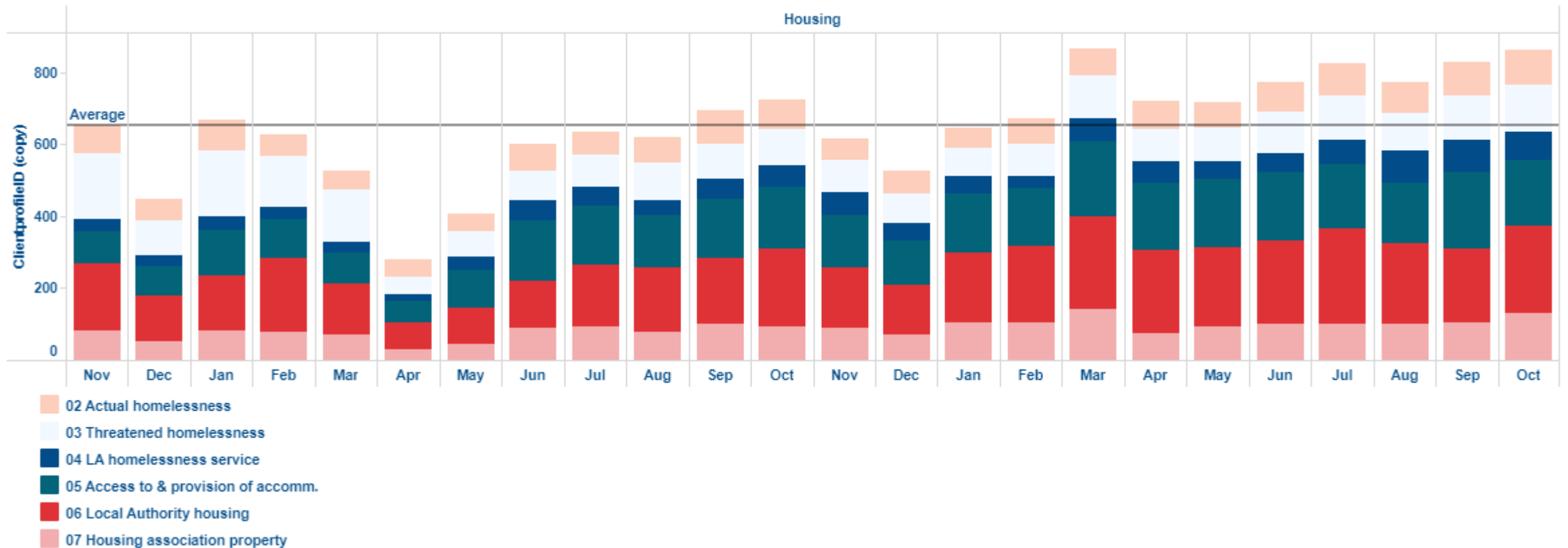
Debt, Financial Services and capability and Legal



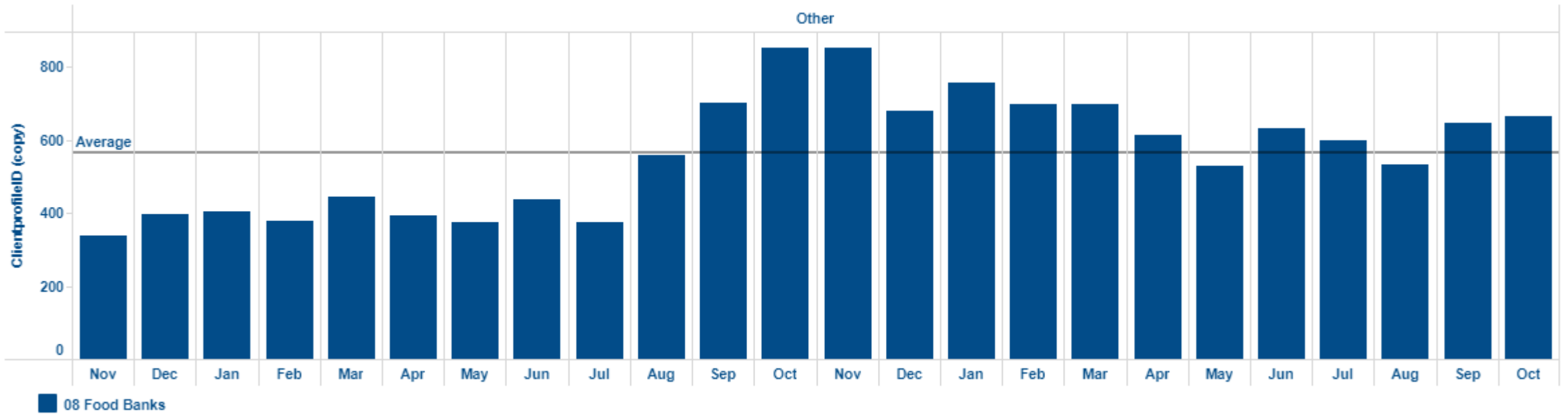
Relationship and Family including Divorce, Separation, dissolution, Children and Bereavement



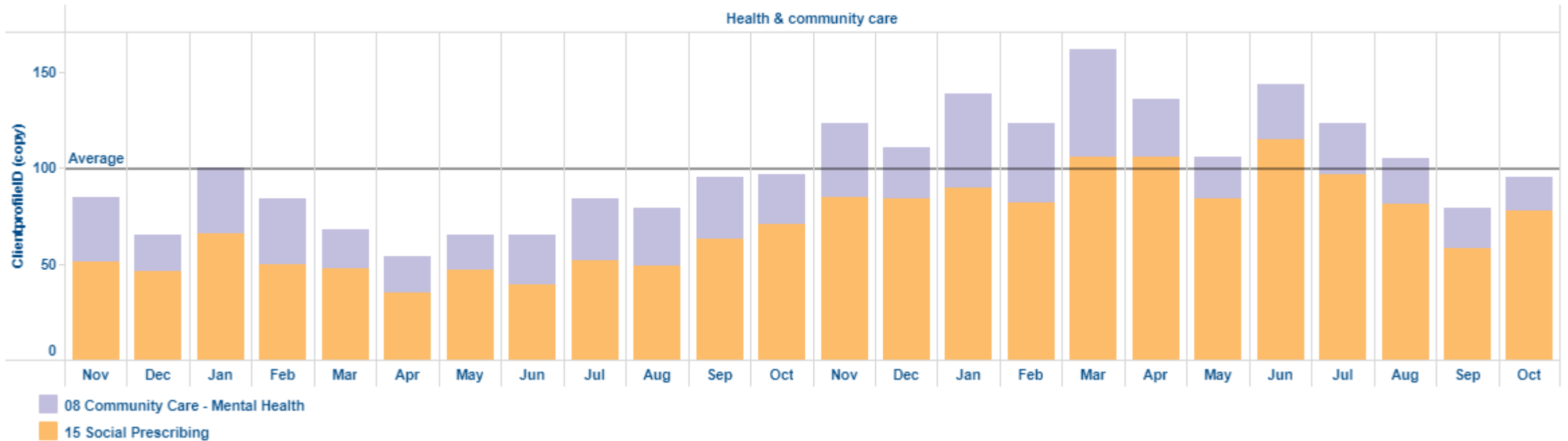
Housing including Homelessness, access and provision of accommodation and Housing associations



Food banks



Mental Health (community care) and Social Prescribing



Citizens Advice: Advice trends 2020 to 2021

[Advice trends 2020 to 2021 - Citizens Advice](#)

Leila Bluck

Health & Wellbeing Public Health Support Officer

Office for Health Improvement and Disparities – East of England

E-mail: Leila.bluck@dhsc.gov.uk