

LCANO 

Click to add text

LEEDS COMMUNITY ANCHOR NETWORK



Background and Formation

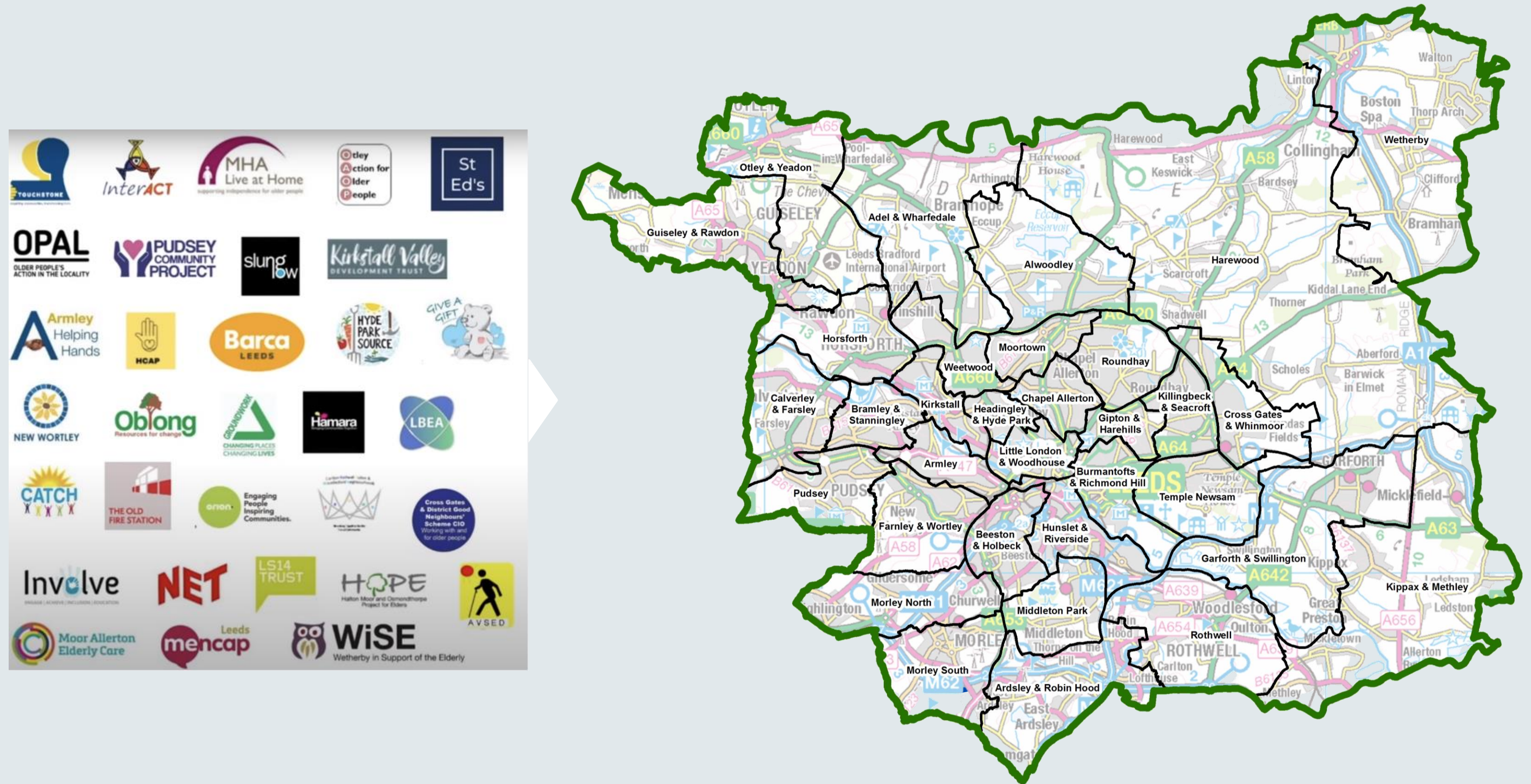
Throughout the Covid-19 pandemic, a group of locally trusted organisations provided emergency support to local people in Leeds, covering a range of activities including food parcels and welfare calls.

Through this work, these organisations have built partnerships with other local organisations to provide a wider package of support to local citizens. These organisations were called Community Care Hubs and aim to work in a citizen-led way, involving local people in the design and delivery of services.



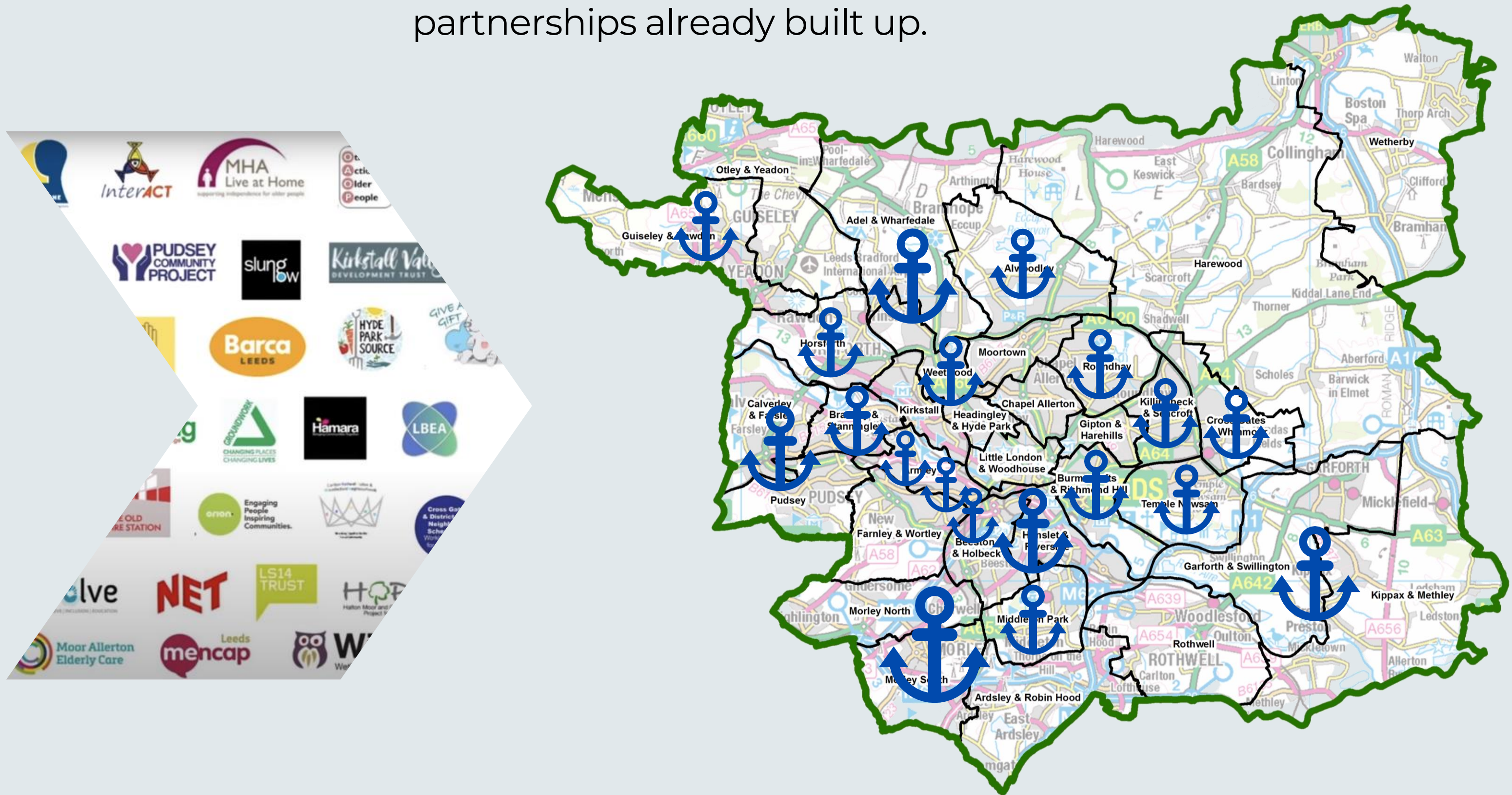
Background and Formation

Community Care Hubs covered each electoral ward during the first two years of the pandemic.



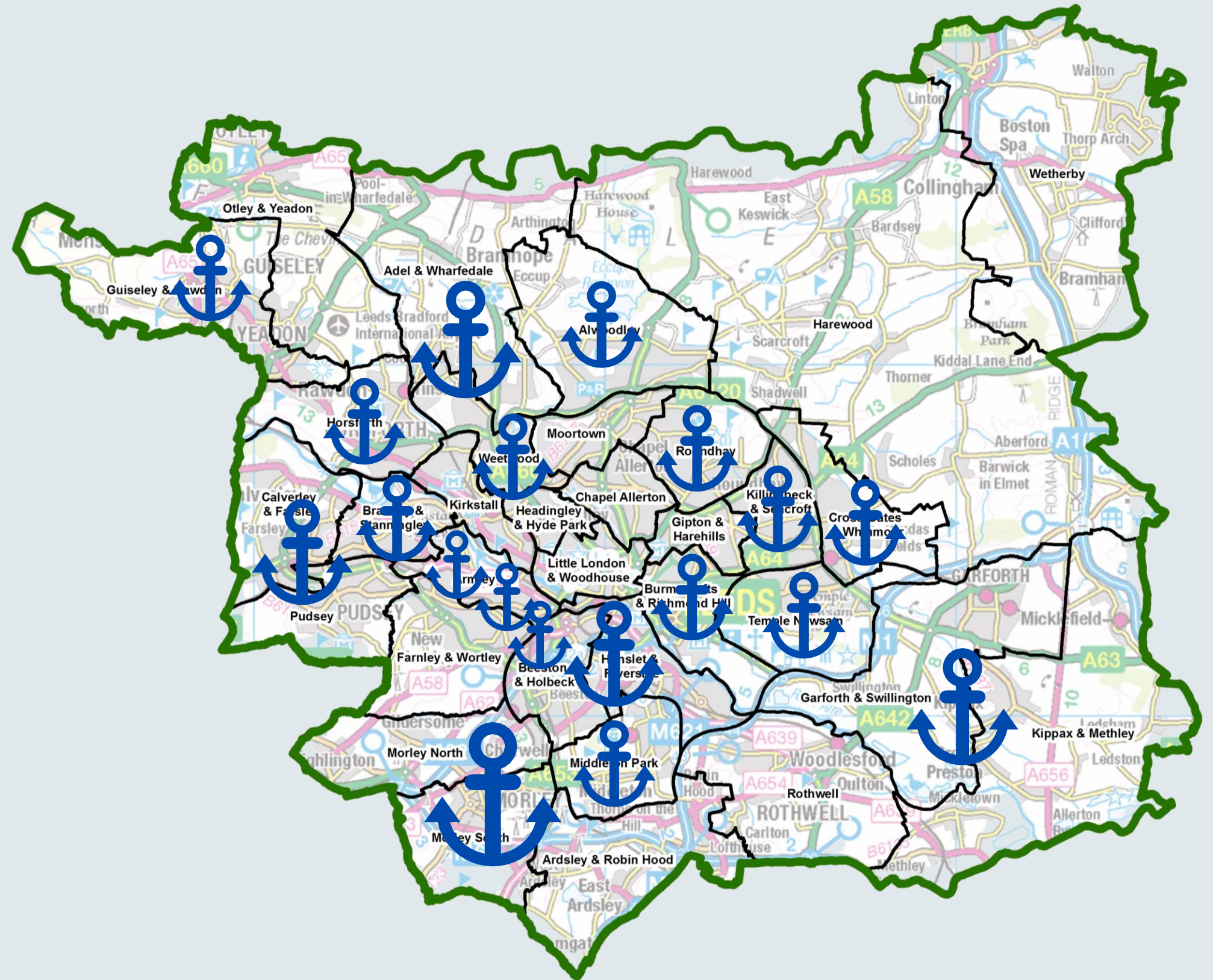
Background and Formation

Many of these went onto form Community Anchors in their area building on partnerships already built up.



Background and Formation

Leeds Community Anchor Network (LCAN) members now number 19 organisations and partnerships, some big some small, but all working to their own particular strengths and with their own knowledge of the communities they work with.



Aim of the network



LCAN is made up of organisations or partnerships who aim to help ensure the communities of Leeds thrive.



Each member has a unique understanding of the communities they work with. The network looks to ensure the voices of communities are heard 'at the 'top table'.



The network seeks to affect systemic change, to be brave and creative and work in partnership to achieve a fairer more just society of thriving communities with equal access to services.

Ways of working

Collaboration not competition

Generous leadership

Supporting small groups and formations of new groups

Decisions by consensus

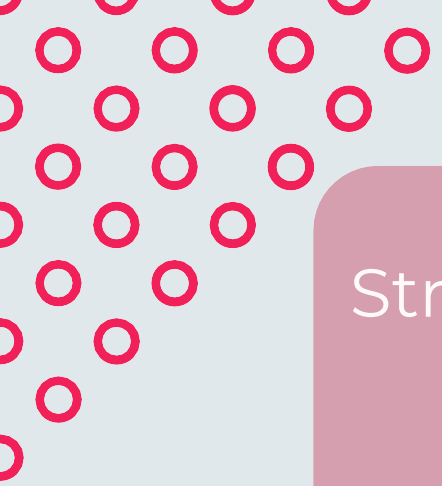
Leadership Group and full network meetings

Recognises anchors at different parts of journey

Sector-led not system-led network

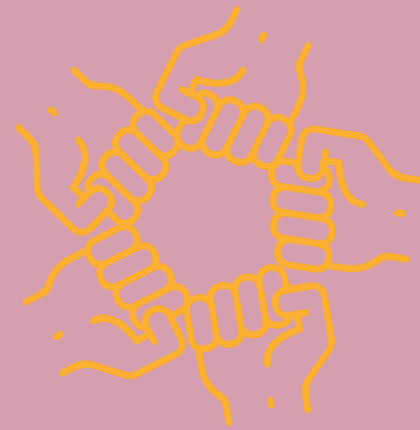
Working groups on particular issues

Community-led organisations



Strengthening Community Participation

Supporting people to feel inspired, motivated and empowered to make a difference and providing opportunities for this to happen.



Sustainable and Local Community Development

Roles of an Anchor Organisation

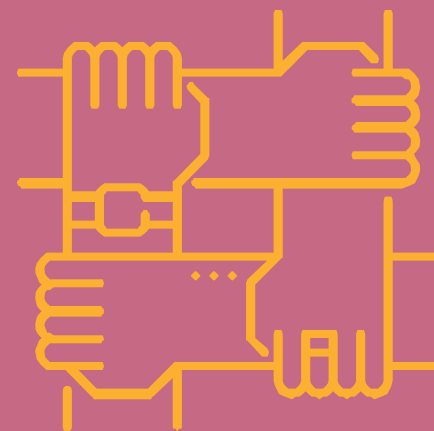
Involvement

Helping people to get involved in activity and have a say about local issues and services. Helping mobilise local democracy.



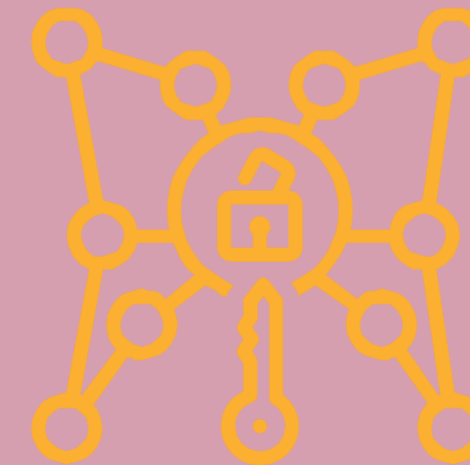
Partnership

Bringing together local organisations to work in an inclusive and open partnership across all other elements (underpinned by agreed values and arrangements).



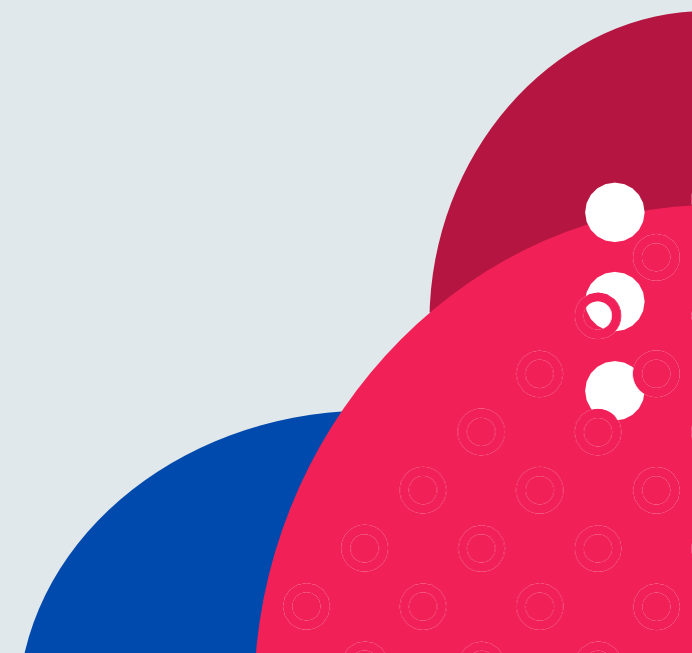
Gateway

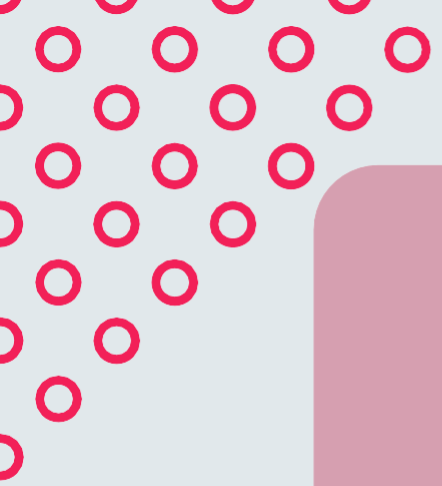
Helping people get access to the other services they need.



LCAN

Leeds Community Anchor Network





Resourcing

Helping to bring resources and opportunities into a neighbourhood from the local authority, external funders, and other agencies.



Sustainable and Local Community Development

Roles of an Anchor Organisation

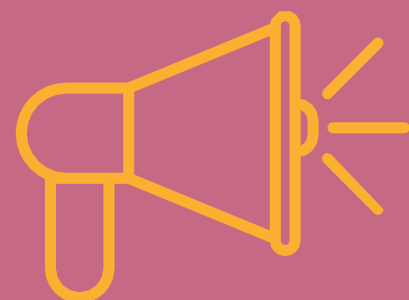
Providing local services

Service Provision which is preferably co-produced with local people, ideally led by local people



Advocacy

Supporting the community to call for changes in policy in practice. Acting as a catalyst of change in public services.



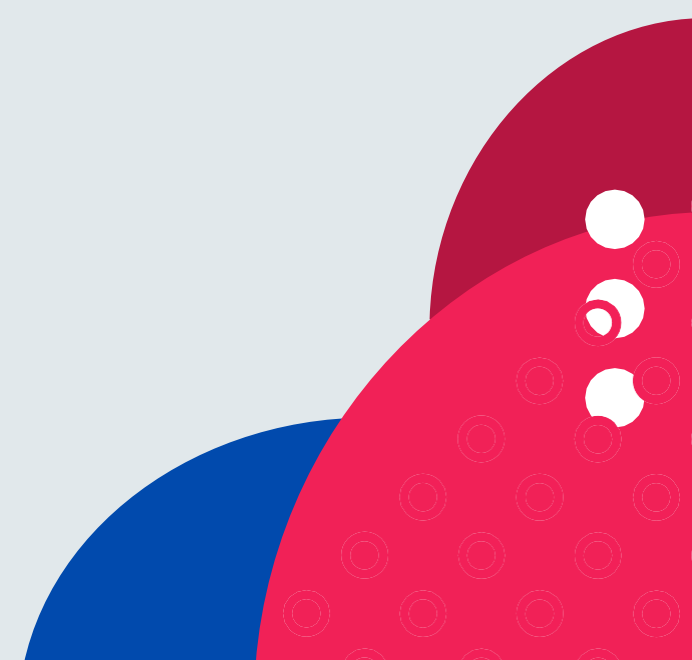
Supporting community organising/organisations

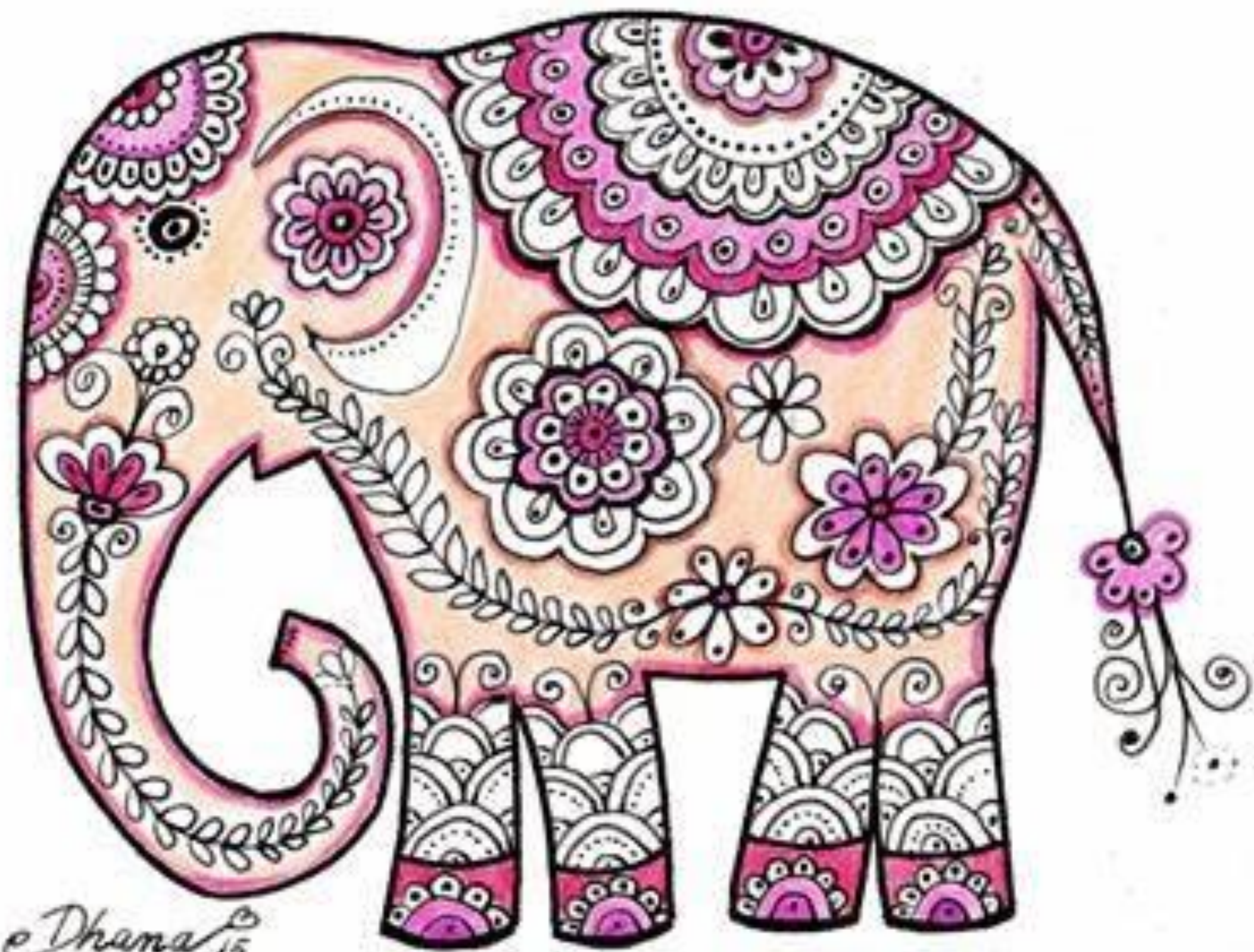
Helping groups develop their skills, organisation, representation, and involvement



LCAN

Leeds Community Anchor Network





Dhana 15

Examples of recent work

Open to new members

For more info speak to your local LCAN Member or
claire.graham@val.org.uk

Visit www.doinggoodleeds.org.uk - Leeds Community Anchor
Network