

UKPHR Information Session: Registering as a UKPHR Practitioner

Alix Sheppard UKPHR PR0322, PFPH
Regional Scheme Coordinator (East of England, North West and The Midlands)



Please complete the online learning beforehand <https://ukphr.org/introductory-day-for-practitioner-registration/>

You will need these slides to hand- as well as the list of supporting documents on the next slide- print off the Supporting Information if possible

Session aims and introductions

- Understand the role of UKPHR and registration Vs membership
- Planning your career- using frameworks
- Learn about the process of registration
- Explore the UKPHR standards for registration & how to demonstrate you meet them in a portfolio of your evidence
- Understand the next steps to take to apply to join the scheme



Supporting Documents

- [UKPHR Guidance document](#) – the “Rules”
- [UKPHR Supporting Information document](#) – the “Answers”
- [UKPHR Standards 2018 2nd Ed](#) the Standards

You will need a hard copy of “the Answers” as it is great to be able to make notes on this document as we go through this session- and subsequent sessions.

[HEE Training Directory](#)- linked courses for practitioners to the UKPHR Standards

UKPHR

To protect the public and promote public confidence in public health practice.

UKPHR sets the standards for admission to the register and remaining on the register.

UKPHR publishes the register and deals with registered professionals who fail to meet the necessary standards.

Registration is a **public statement** that you, as members of a professional group, agree to meet and maintain standards of good practice appropriate to the work that you do.

Categories of registration

1. [Public Health Specialist](#)
2. [Specialty Registrar](#)
3. **Public Health Practitioner by portfolio assessment**
4. [Public Health Practitioner by Apprenticeship](#)



Benefits

For applicants

Recognition of one's competence by others, including employers.

Self-confidence about one's own abilities.

Independent **validation** of competence in public health practice, which can be shared with line managers, employers and commissioners of public health services

It has given me the confidence that I do have the knowledge and skills for public health. This was particularly important to me because I came from another area of work entirely, so I have found it very affirming.

For employers

Easy to check if practitioner is on register - and know where to take a query or complaint.

Help satisfy recruitment **due diligence**, as competence is assured if registered.

System in place to support practitioners and ensure competence is maintained through, for example, a formal CPD requirement.

Since Covid-19, employers report having more confidence in registered practitioners and are able to redeploy them more easily in response to the changing needs of public health

In a nutshell, it evidences that we understand and are able to apply the 'nuts and bolts' of public health.

Practitioners- often misunderstood

- The term 'public health practitioner' is designed to describe a level of practice, not a specific job role or type of job.
- Autonomous practice, contributing to policy and programme development.
- At least 2 years+ of practice at AFC Band 5 and above, Skills for Health levels 5-8.
- A lot of misconception about "levels" 5 is the **minimum** at which an individual would have the breadth and depth of experience
- Knowledge level **broadly** equivalent to a bachelor degree in key PH skills, not topic-specific. Mandatory training accepted.

Practitioner roles are varied and at many levels.

Job titles are not reflective of level in most cases.

Level of qualifications also vary widely.

Working alongside people from different disciplines of public health to develop your portfolio is an added benefit of the registration process.

It is not a race to complete – the benefit is in the development and reflection you will undertake on your journey.

Average time: 10-18 months

Mental Health Promotion Specialist Domestic Violence Liaison Nurse Screening & Immunisation Co-ordinator
Research Officer Senior Health Promotion Specialist Public Health Project Manager **Project Manager**
Public Health Lead Head of Information and Intelligence Oral Health Advisor
Public Health Lead - NHS Health Checks Specialist Health Improvement Practitioner Health Promotion Manager
Senior Manager Research Fellow Pressure Garment Study Health Inequalities Development Manager
Library & Knowledge Services Manager Public Health Programme Manager **Oral Health Promoter** Public Health Development Commissioner
Senior PH Manager Public Health Project Manager Specialist Health Improvement Practitioner Health Improvement Officer
Health Improvement Research Fellow Health Checks Service Manager Principal Public Health Practitioner
Health Promotion Officer Community Health Trainer Coordinator TB Clinical Research Nurse Healthy Lives Worker
Health Improvement Specialist Strategy and Community Coordination Officer PH Immunisation & Screening Manager
Health Development Officer Public Health Specialist Registrar Senior Health Improvement Officer Senior Environmental Health Officer
Senior Public Health Practitioner Specialist for Children and Young People Head of Service Clinical Service Manager
Senior Health & Wellbeing Advisor Acting Principle Public Health Practitioner Development Manager (Health Protection)
Oral Health Promotion Practitioner Health Improvement Officer Infant feeding project officer
Senior Public Health Intelligence Analyst Senior Public Health Manager Senior Health Protection Practitioner
Public Health Programme Manager Physical Activity Assistant Early Years Coordinator Strategic Commissioner for Sexual Health and Well-being
Public Health Programme Officer Health Improvement Lead (Mental Health) **Public Health** Commissioning Head of Service Project Manager
Health Improvement Lead (Mental Health) **City Regions Project Lead Practitioner** Health Protection Nurse
Benchmarking Project Lead Health Checks Programme Manager Public Health Advisor Public Health Project Manager
Locality Public Health Partnerships and Commissioning Head **Scientific Officer**
Health Improvement Principal Dental Therapist Health Development Officer Team Leader (Drugs & Alcohol)
Senior Public Health Research Officer Oral Health Improvement Practitioner Childhood Obesity Programme Co-ordinator
Programme Manager Senior Public Health Practitioner Commissioning Public Health Lead
Senior Public Health Development Commissioner Stop Smoking Adviser Health and Physical Activity Development Manager
District Public Health Development Officer Health Improvement Practitioner Business Support Manager
Team Manager Health and Wellbeing Practitioner Oral Health Improvement Co-ordinator Health Improvement Specialist
Senior Health Promotion Specialist Senior Health Promotion Specialist Nutrition Team Leader
Regional Tobacco Control Policy Manager Head of Commission Support Health and Social Care Tobacco Control Programme Manager
Public Health Intelligence Analyst Well-being and Partnership Lead Project Co-ordinator Armed Forces
Health Improvement Team Lead Trainer Public Health Resource & Campaigns Officer Suicide Prevention Worker
Environmental Health Officer Health Improvement Manager Road Safety Manager Lecturer Faculty of Health Sciences
Health Improvement Commissioning and Performance Lead Tobacco Control Strategy Lead Sexual Health Programme Lead
Health Improvement Co-ordinator Health Improvement Specialist **Health Improvement Specialist** Lead Trainer Health Improvement
Mind Your Heart Development Worker Tobacco Control Lead Senior Health Promotion Practitioner
Health Promotion Manager Health Improvement Nutrition Specialist Senior Health Promotion Practitioner
Specialist Health Improvement Practitioner Health Improvement Senior Business Analyst Healthy Living Coordinator
Health Promotion Officer Health Improvement Nutrition Specialist Health & Wellbeing Physical Activity Co-ordinator
Patient & Public Involvement Manager Chlamydia Lead Nurse Independent Public Mental Health Practitioner

Frameworks and levels

There are a number of frameworks for career planning and development

The UKPHR Standards themselves can be used as a framework to plan your CPD as they cover the key basic principles of public health practice.

Using a framework will help you to plan your career, identify areas for development and identify your areas of interest as you progress in public health.

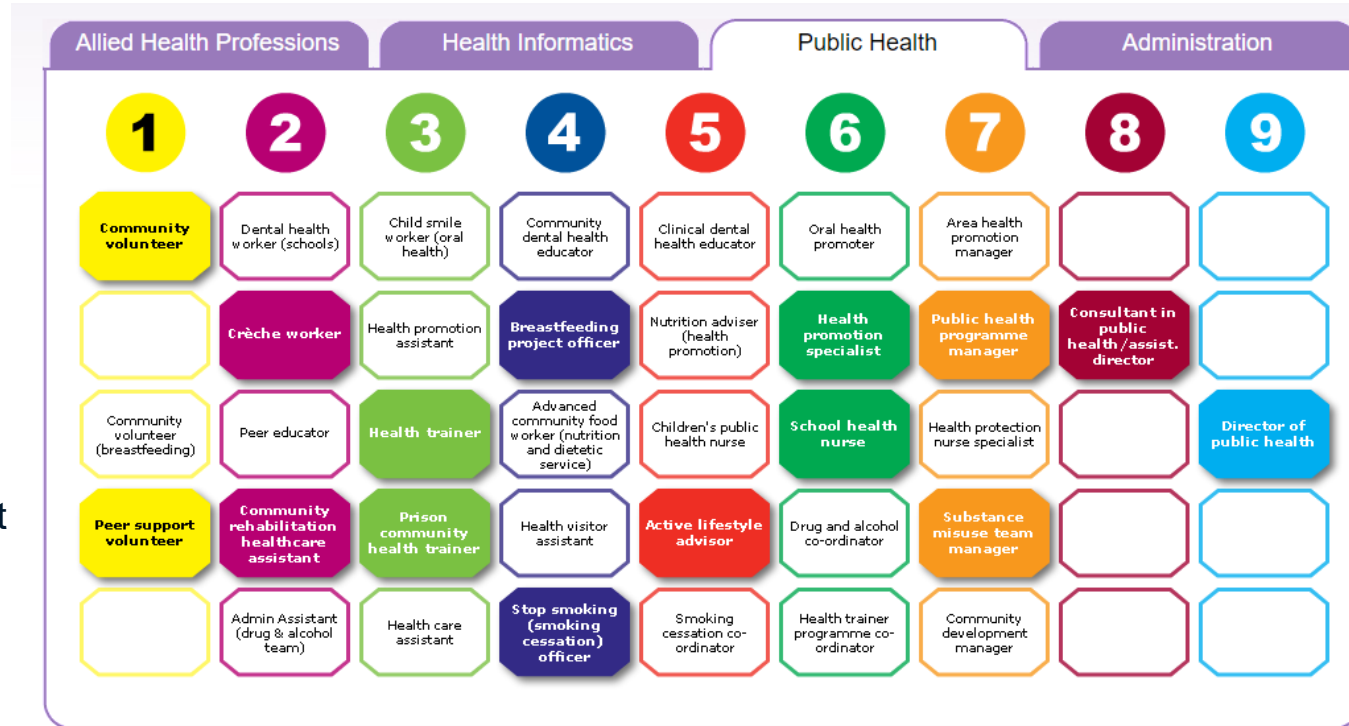
Embedding this in your appraisal and professional development plan (PDP) will help you to engage with your employer to improve your practice.

[PHSKF](#)

The term “practitioner” in the context of UKPHR registration means people working at levels 5,6 and 7

The term “**autonomous practice**” is key

You will be expected to show you have been working at this level for at least 2 years



Assessors

Assessors:

- At least two years' experience at senior or advanced practitioner level or above in multi-disciplinary public health, or in a post of equivalent responsibility, and/or to be registered as a public health practitioner with the UKPHR and/or to be of good standing with another appropriate professional body and be able to provide relevant references
- To be able to provide evidence of current CPD
- To be skilled in assessing evidence submitted to demonstrate knowledge, understanding and its application in practice, following successful completion of mandatory training by the UKPHR
- To be able to devote the necessary time and to give the role appropriate priority

WE NEED YOU



Membership bodies

There are two main organisations which offer memberships:

RSPH <https://www.rsph.org.uk/>

FPH <https://www.fph.org.uk/about-fph/>

Membership is not the same as professional registration and the two should not be confused.

You may however be both a registrant with a professional body AND a member of another.

FPH offers a CPD programme which many people find useful
<https://cpd.fph.org.uk/>



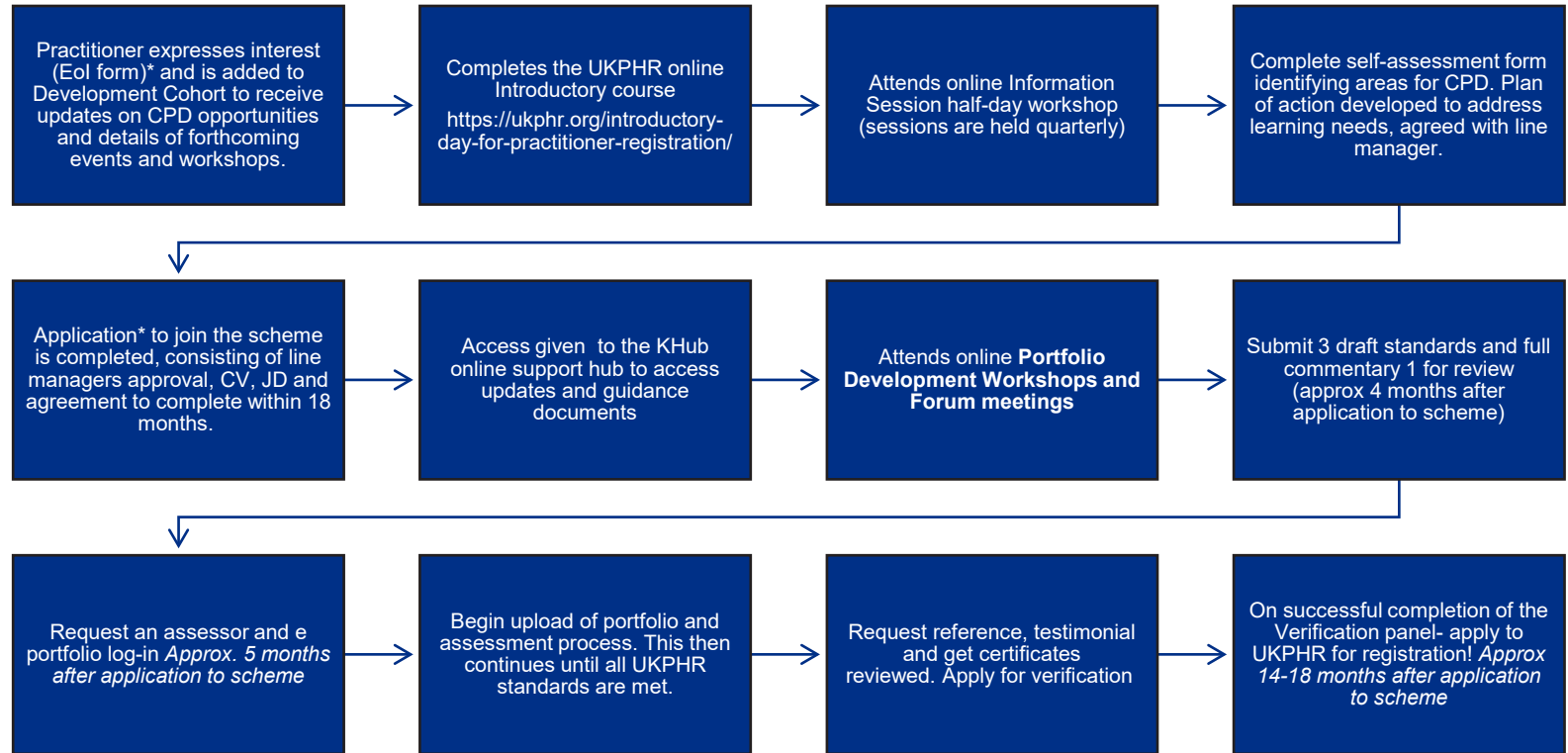
**FACULTY OF
PUBLIC HEALTH**



**Chartered
Institute of
Environmental
Health**

Regional Scheme Support

- **Joanne Deighton**
- **Portfolio Skills Workshops**(2)
- **Remote review** of your first commentary prior to submission
- **Forum meetings** with peers to discuss standards in depth (every 6-8 weeks)
- **Online KHub platform** for guidance documents *and examples*
- **Learning Hub-** modular step by step portfolio guide (online)
- **HEE Training Directory-** linked courses for practitioners to the UKPHR Standards



The UKPHR Standards

34 standards spread between 8 “areas of practice”. You need to evidence ALL of them

1. Practising professionally, ethically and legally
2. Using public health information to influence population health and wellbeing
3. Assessing the evidence for public health interventions and services
- 4 Protecting the public from health risks while addressing differences in risk exposure and outcome
5. Implementing public health policy and strategy
6. Collaborating across organisations and boundaries to deliver the public health function
7. Planning, implementing and evaluating public health programmes and projects
8. Communicating with others to improve health outcomes and reduce health inequalities

Making sense of the standards

34 standards spread between 8 areas of practice

50% of evidence within last 5 years

Knowledge, understanding and application required shown for each standard

Corroborative evidence required to demonstrate knowledge and application for every indicator

8.1 Communicate public health information clearly to a variety of audiences

2. Using public health information to influence population health and well-being
2.1 Identify data and information requirements to deliver the public health function demonstrating use of epidemiological terms and concepts.

K, U and A

For **every one** of the 34 standards you must demonstrate all 3 elements

Knowledge	Where did you acquire this knowledge? What do you know?	-Described in the commentary -Requires a piece of evidence for each standard (certificate or reflective piece)
Understanding	Why do we do this (the theory above)	-Demonstrated through a short paragraph in the commentary (No corroborative evidence required)
Application	How have you applied your knowledge and demonstrated your skills in practice? Give an example.	-Described in the commentary -Requires a piece of evidence for each standard that clearly situates you in the piece of work

Commentaries

- Your portfolio will be made up of **3 (or 4) commentaries**, each of which represents a *discrete piece of work*
- The commentary is the *vehicle* for demonstrating your Knowledge, Understanding and Application for the standards
- You will be required to provide documentary additional evidence of
 - 1) how you acquired the **knowledge** for each standard
 - 2) How you **applied** the standard in practice.

Writing commentaries is an iterative process – expect to work through several drafts, and for it to take time for you to find your way through the requirements

Evidence

- **Half of all of the evidence must be from the past 5 years** (at time of application for Registration)
- The evidence *must* situate you in it (is your name on the document?, is it clear what part you played in the work?)
- **Different types of evidence**
 - Written reports from work setting/ emails
 - Testimonials from line manager/others to verify your involvement
 - Certificates and curriculum for courses attended
 - Reflective notes to show knowledge gained from self- directed learning
- You need at least 1 piece for every standard to demonstrate application and 1 to demonstrate how you acquired the knowledge.
- You can use evidence items more than once

Costs

- NHSE funds the portfolio development scheme support
- Following verification of your portfolio, you will need to apply to UKPHR for registration
- Application form is in Supporting Information document; plus CV, testimonial, reference
- There is an Admin fee + subscription fee £108 per year which you will pay personally
- Registration valid for 5 years
- CPD is the basis of demonstrating fitness to practice.

Any Questions?

We will now carry out some tasks.

For the standards below, please consider how you will address them and what evidence items you will use to prove

a) Knowledge

- 1.3, 2.3, 5.1, 6.2, 7.1, 8.1



UKPHR Standard	Evidence item
Example: 1.3	E&D Mandatory training certificate

Next steps

Complete the self-assessment form to identify gaps in knowledge or application (experience)

Work on some of the areas identified prior to applying by completing CPD and finding certificates and evidence of application for EVERY standard

Log in and access the portfolio resources on Khub and Learning Hub- this is important as it will help you to plan which items of evidence to collate

Talk to your line manager- and connect with someone in the region who has already completed and can guide you as you progress

Do not underestimate how long this may take as the self-assessment form is an important part of your portfolio progression, you will use this document throughout your portfolio journey.

Just like decorating a room

- Preparation is everything!
- The more you do in the planning stage, the easier the writing will be.
- Take it step by step.. It is an easy process
- If you follow it carefully!



Ready?

- You can start to prepare for registration at any point in your career
- Once you have been working at an autonomous level (Skills for Health* level 5 and above) for 2 years, you are eligible to join a scheme
- But starting as soon as possible is a great idea- as you can compile much of your portfolio, and complete all the learning whilst you progress
- Talk to your line manager and include UKPHR portfolio development in your annual appraisal, using the Standards* to help you plan your CPD for the year ahead

Get Set

- Create a UKPHR folder on your computer and begin to track down all your public health related certificates for training that you have attended- upload pdf copies to this folder and try and find the module outlines as well
- Review yourself against the Standards and link the certificates to each standard. Use a self assessment form* and keep adding to it as you complete learning objectives. Where are your gaps? Find appropriate courses or complete self guided learning.
- Complete the UKPHR Online Introductory session* to give you more information about what is required
- Read the Guidance and Supporting Information* documents thoroughly- these contain all the information you need on the processes of practitioner registration

Go!

- Once you are ready to begin writing your commentaries, apply to your regional scheme.
- You will need sign-off from your line manager
- Start to consider which 3 succinct pieces of work you will write about in your "commentaries" Remember- big is not always best- choose work that is a) recent b) you worked mostly autonomously
- You will need your CV, JD and completed self assessment form to accompany your application

Contact details

Alix Sheppard

UKPHR reg PR0322

Public Health Workforce Specialist

•

UKPHR Public Health Practitioners registration scheme coordinator (East of England, North West and The Midlands)

•

I work 5 days a week, mostly 7am until 3pm.

alix@healthtalks.org.uk



Training &
Consultancy