

Yorkshire & Humber Sexual Health, Reproductive Health & HIV strategic approach



Developed by the

[Yorkshire & Humber Sexual Health Community of Improvement](#)

on behalf of

[Association of Directors of Public Health \(ADPH\) Yorkshire and the Humber](#)

January 2024

Yorkshire & Humber Sexual Health, Reproductive Health & HIV (SRHH) strategic approach

Background

This document sets out the strategic approach to sexual health, reproductive health and HIV agreed by Directors of Public Health across Y&H. It is informed by national policy documents ([Women's Health Strategy for England](#), [Towards Zero: the HIV Action Plan for England - 2022 to 2025](#)), and position statements ([Policy position: Sexual health | ADPH](#), [What-Good-Sexual-and-Reproductive-Health-and-HIV-Provision-Looks-Like.pdf \(adph.org.uk\)](#))

It focuses on the key priorities that need to be addressed to achieve good sexual & reproductive health for the population of Y&H. This covers the work of a whole range of system partners including local authorities, integrated care boards, NHS England, health care providers – primary and secondary care, and voluntary/community organisations.

The intention is that this document can be used to support engagement with system partners at regional and local level; and used by local areas to inform strategy documents, needs assessments, local priority setting etc (in the absence of a single national policy document that incorporates all areas of sexual health, reproductive health and HIV).

Overview & Vision – SRHH issues across the life course

Vision

‘All people in Yorkshire & Humber experience good sexual and reproductive health and wellbeing and are supported to develop safe, healthy, enjoyable, and consensual sexual relationships’

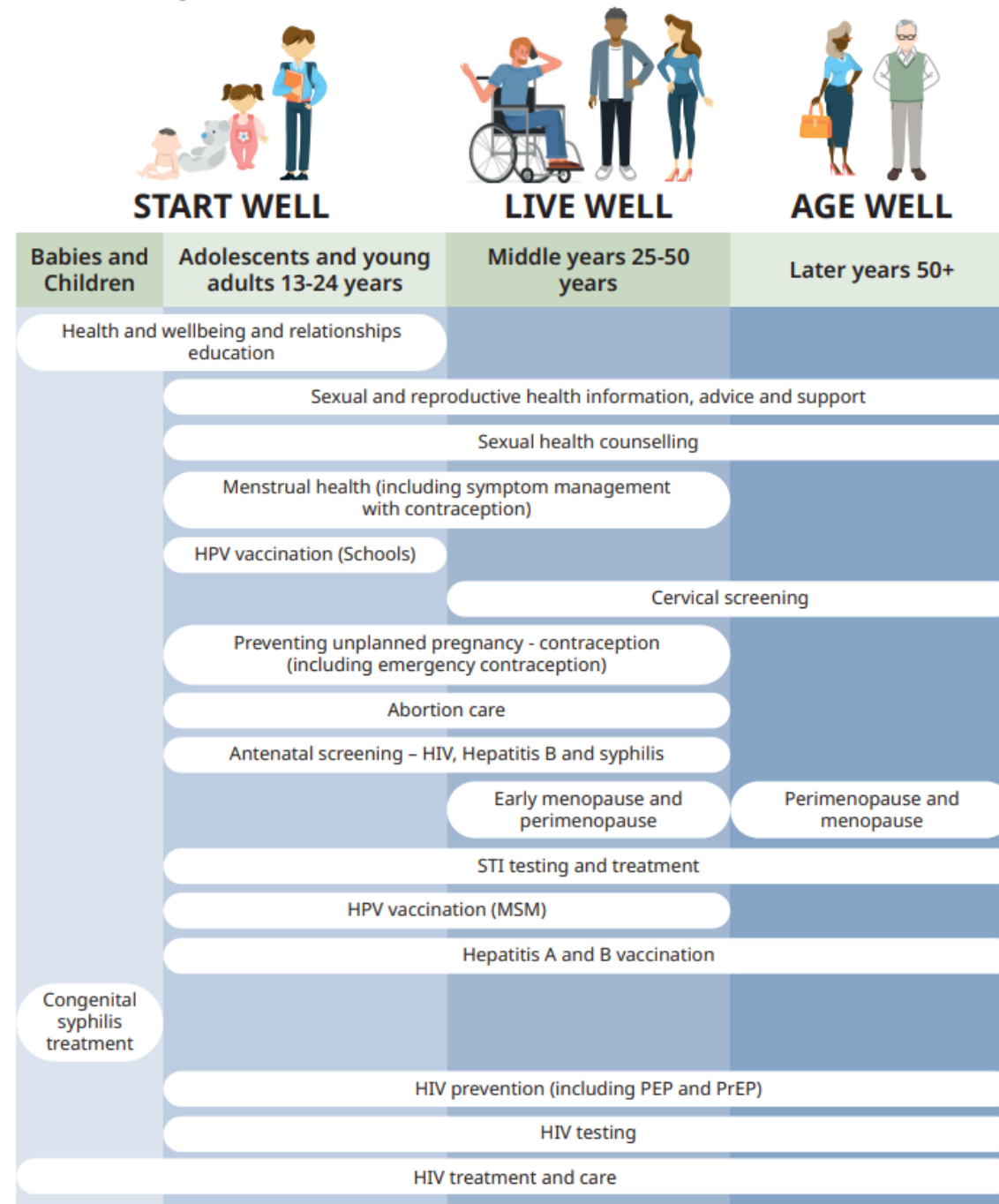
Key elements:

A **whole systems approach** covering prevention, improvement, promotion and protection; which spans the three areas of sexual health, HIV and reproductive health

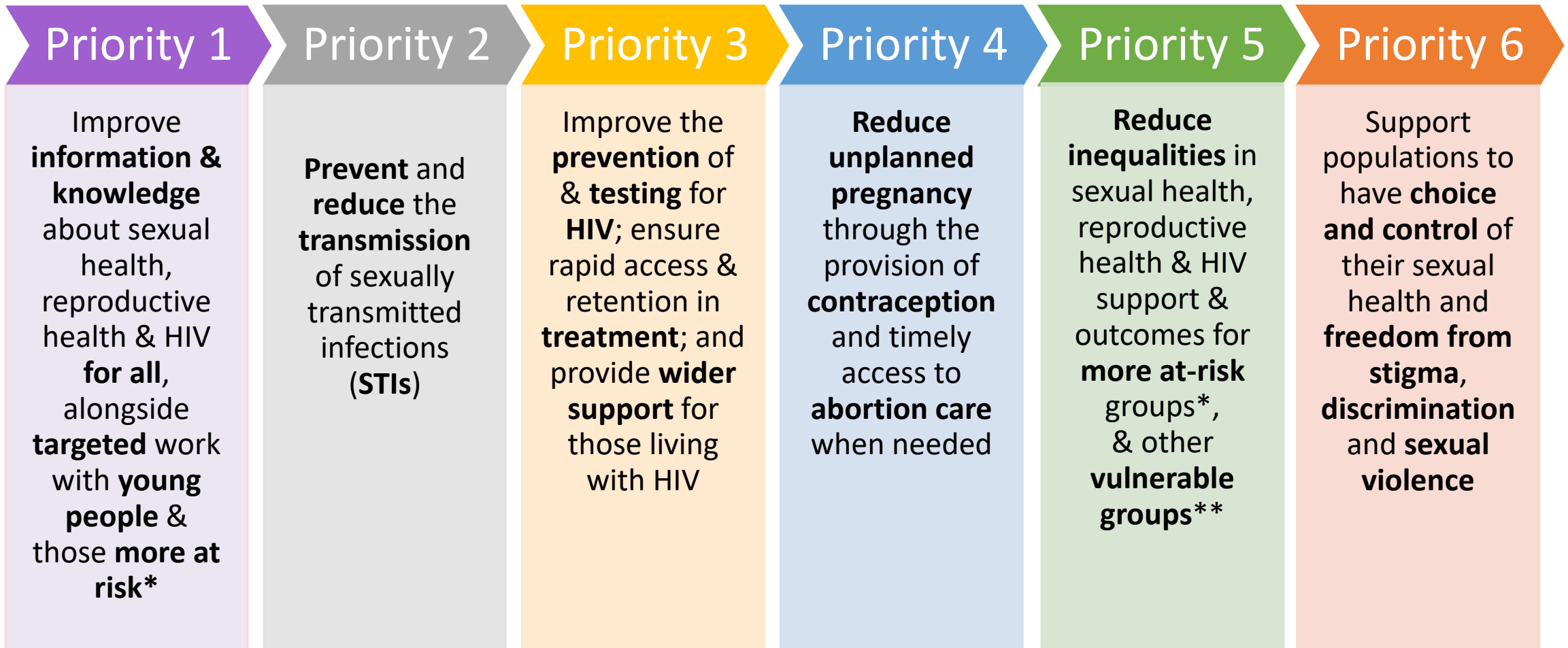
Strong **focus on inequalities** – higher risk groups and disadvantaged groups

Recognise and address **stigma and discrimination** as a factor compounding poor sexual and reproductive health

Sexual, reproductive health and HIV across the life course



Strategic priorities



*More at risk groups – e.g., young people, MSM, particular ethnicity groups, sex workers

**Vulnerable groups – e.g., people with learning disabilities, vulnerable migrants, people dependant on drugs or alcohol

Guiding principles

Collaborative

- Work in partnership with a broad range of system partners at local, regional and national level
- Informed by those with lived experience and guided by the principles of co-production

Evidence based

- Guided by the most up to date evidence, data, clinical and policy guidance

Innovation & learning

- Be aware of innovations in practice; be open to implementing, evaluating and disseminating good practice; and support learning from others in the system

Equity

- Focus on addressing health equity - “the absence of unfair and avoidable or remediable differences in health among population groups defined socially, economically, demographically, geographically or by other dimensions of inequality (e.g. sex, gender, ethnicity, disability, or sexual orientation)”

Sex-positive

- Sex and sexual pleasure are a beneficial & healthy part of humanity, and should be free from embarrassment, guilt or judgement
- A positive, open & non-judgmental approach irrespective of disability, ethnicity, culture, gender identity & sexual orientation to enable everyone to live with freedom & respect