

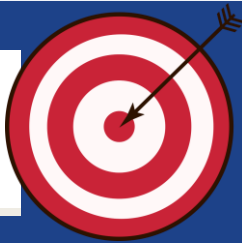
Co-producing Bradford's Just Transition: Community-Led Evidence for Inclusive Climate Action

Fiona Phillips (Bradford Council (HDCRC)) and Kelli Kennedy (University of York)

Climate change is increasingly recognised as a major public health challenge, with impacts felt through housing conditions, air quality, access to green space, transport systems and economic security. These impacts are unequally distributed, reinforcing existing health inequalities. Local authorities therefore play a critical role in ensuring that climate action simultaneously improves population health and reduces inequities, rather than exacerbating them.

Bradford Council Sustainability Service partnered with the Bradford Health Determinants Research Collaboration (HDCRC)'s Evidence into Policy Hub (a partnership with York and Bradford Universities) to bring a new dimension to its emerging Climate Action Plan: direct insight from communities. Through the Net Zero community research project, Bradford HDCRC helped shift the conversation, placing the lived experiences, priorities, and values of residents at the heart of climate policy development.

Aims



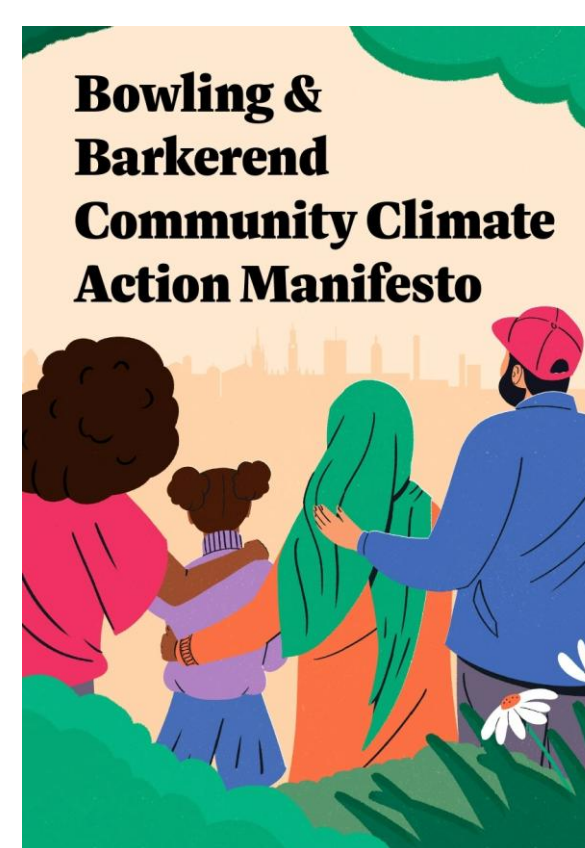
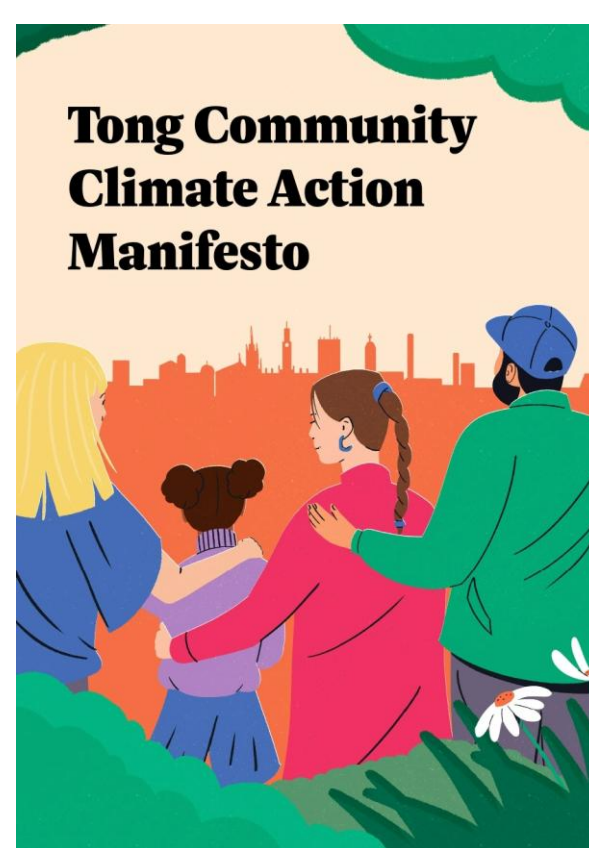
To generate **community-led evidence** from those not traditionally heard in local climate action and who may be at risk of being left behind in the transition to net zero, to **inform Bradford's Climate Action Plan** and support a just, inclusive transition to net zero.



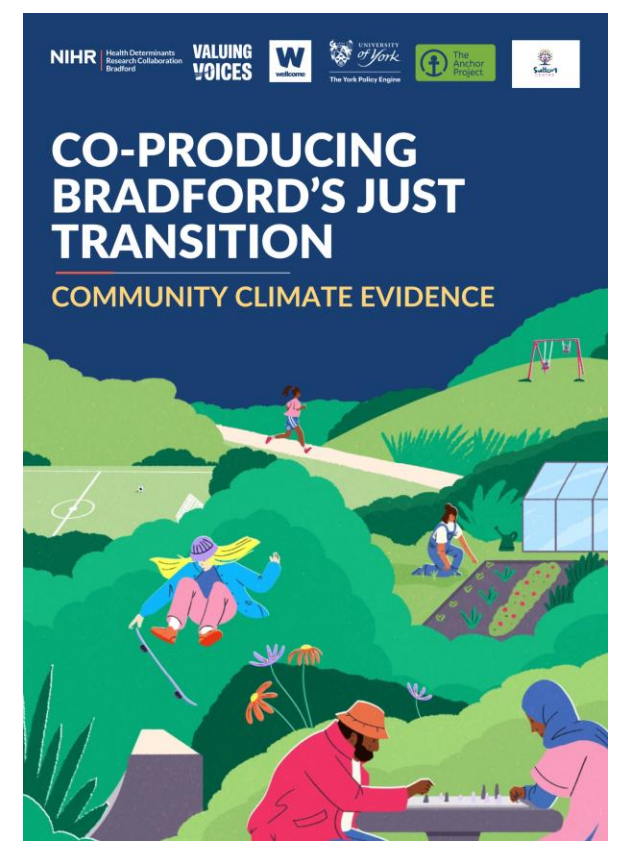
Photo: Climate Community Researchers and community members engaging in a 'Climate Fresk' climate education session

Methods

- Community-based participatory research approach
- Focus on two wards: Tong and Bowling & Barkerend
- Six residents trained as paid climate community researchers
- Co-designed and facilitated community workshops
- Explored local assets, climate impacts across the life course and priorities for action, without explicitly talking about health
- Produced co-developed community climate manifestos:



Find the manifestos and project report at the QR above



Key Findings

- There was **strong support for climate action when it is linked to everyday priorities**, such as: public transport, housing quality, education and family wellbeing, and community safety.
- There were **concerns that poorly designed policies may widen inequalities** and negatively affect key life transitions (e.g. into the workforce).
- **Genuine community engagement led to increased trust and legitimacy** and the generation of practical, policy-relevant insights to inform Bradford Council's Climate Action Plan.

From my experience as a climate community researcher, I found that explaining climate change in a simple way to the local community helped build trust between the people and local authorities so we can work together to make the region healthier for future generations - Ruaa (Climate Community Researcher)



Recommendations

- **Frame climate action in terms of health and everyday life** (e.g. warm homes, clean air, safe transport) to increase relevance and engagement.
- **Embed community voice early and continuously**, rather than relying on one-off consultation.
- Prioritise equity in all policy decisions, assessing who benefits and who may be disadvantaged.
- **Work across sectors** (public health, planning, housing, transport) to address interconnected determinants of health.
- **Invest** in community capacity, including paid roles and partnerships with trusted organisations.

Climate Change and You

We know that climate change and climate policies will impact everyone's daily lives - including yours. Previous research suggests that the following six areas of life are expected to change for everyone in Bradford, including you and me.

Adapted from Snell and Middlemiss, 2025; Middlemiss et al., 2024; 23



Bespoke handout used to explain the academic concept of 'Areas of Life' to participants (Snell and Middlemiss, 2025), which replaced using jargon and specialist terms for the project.