

# Inclusion health data and intelligence resource for England: An overview of published data and intelligence

Cathie Railton (Programme Manager), Simon Orange (Principal Public Health Intelligence Analyst) and Charlotte Bamford (Principal Knowledge Transfer Facilitator), OHID (DHSC), North East and Yorkshire

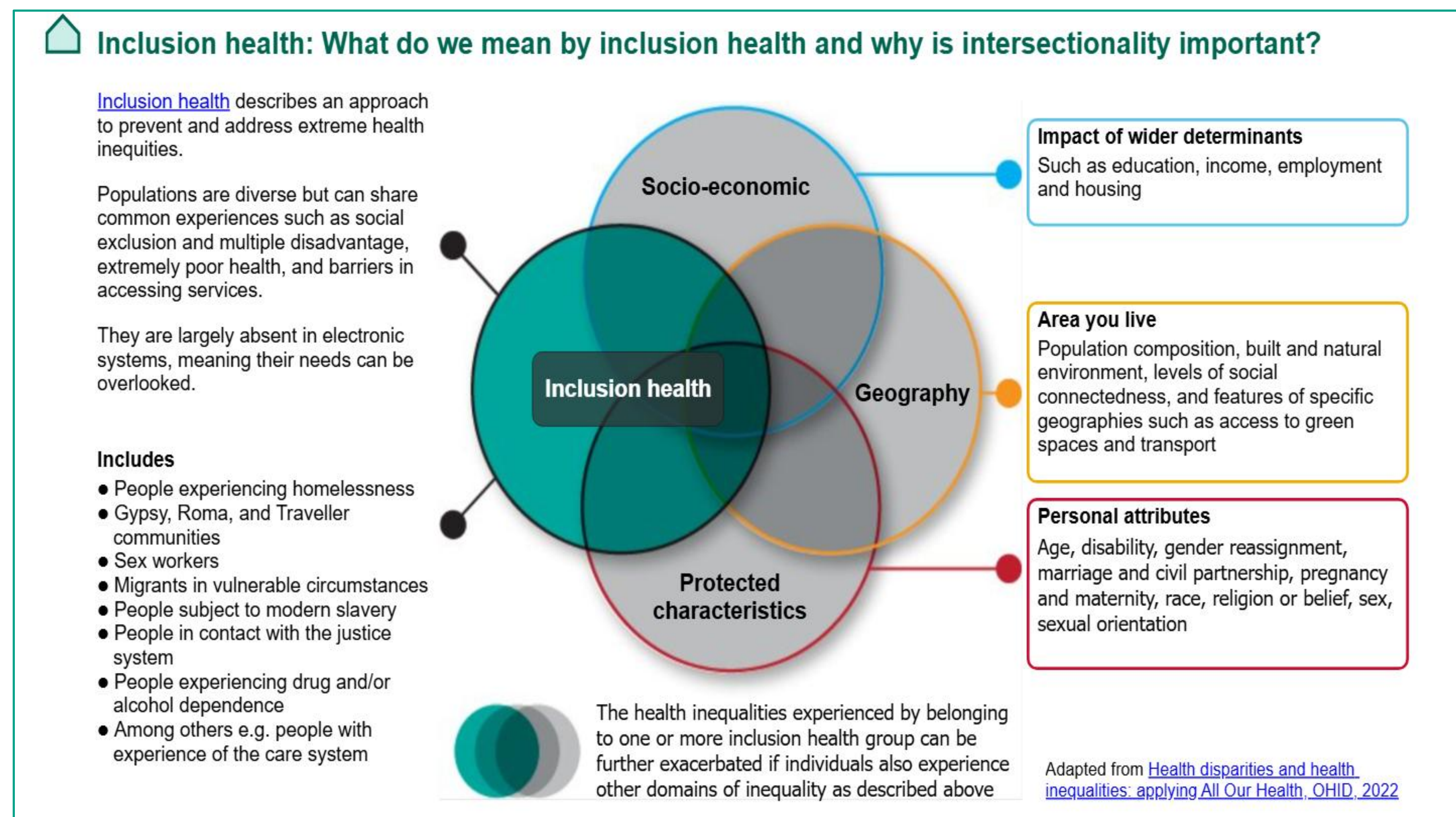
## Introduction

Inclusion health describes an approach to prevent and address extreme health inequities (see figure 1).

Populations are diverse but can share common experiences such as social exclusion, extremely poor health, and barriers in accessing services. They are largely absent in electronic systems meaning their needs can be overlooked.

Stakeholders working at a local level requested support to identify data and intelligence about inclusion health groups to ensure their needs can be better met.

Figure 1: Inclusion health and intersectionality



## Our response

We developed a [new interactive resource](#) (see QR code below) to support informed decision-making and develop tailored solutions to the specific challenges these groups encounter.

A collaborative project between DHSC OHID, UKHSA, NHSE with representatives from local government, ICB and VCSE, its aim is to support work on inclusion health at a local level.

It contains a summary of statistics already in the public domain and brings these together into one place with accompanying narrative to highlight the importance of addressing the needs of inclusion health groups across different organisations, sectors, and programmes of work.

Figure 2: Inclusion health resource contents

Office for Health Improvement & Disparities

Beta version published April 2026

### Inclusion health data and intelligence resource for England: An overview of published data and evidence

This resource has been developed by representatives from DHSC, UKHSA, NHSE, ICBs, local authorities and Pathway to support work on inclusion health at a regional, sub regional and place level. It has been developed to complement the [Spotlight tool](#), which includes national level data and some limited sub national data, to highlight the needs of inclusion health groups and support organisations and networks at a local level to respond to the implementation of the [10 Year Health Plan for England: fit for the future](#) and more specifically the development of the [Integrated Neighbourhood Health Framework](#).

**What is included**  
A summary of publicly available data and intelligence to support work on inclusion health. Each section is divided up into key messages, data, health overview and policy, guidance and further resources.

**A note on the pack**  
Local data on health needs and outcomes for inclusion health populations are not routinely available. This resource collates numerical population data into one place and summarises key academic research and published material to highlight health needs.

The use of national datasets is limited and should be used in conjunction with local sources. As inclusion health populations are largely invisible in many nationally led systems, it is important to utilise more locally available data and intelligence which can provide a much richer source of information and can describe populations and their needs more effectively.

Whilst the resource is largely focused on adults it is important to recognise that children of parents or carers in inclusion health groups are more likely to have persistent and poor health outcomes throughout their lives. When developing this approach locally, it is important to ensure that risk factors for children and young people and their needs are addressed.

Version published 30 April 2026, data up to date as at April 2026. See data handling statement

## Audience

The target audience is the professional workforce, including:

- Local authority public health
- Other local authority departments
- NHS commissioners and providers
- Justice partners
- Voluntary, Community and Social Enterprise organisations
- Local networks



## Acknowledgements

