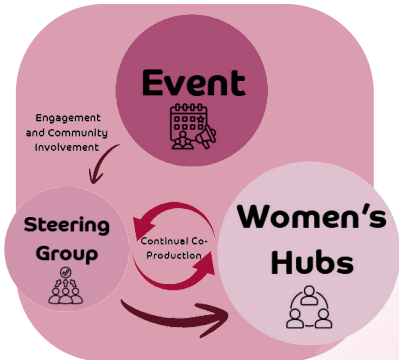


North Doncaster Women's Wellbeing Hub

Building Healthy Communities through Co-produced Community-led support

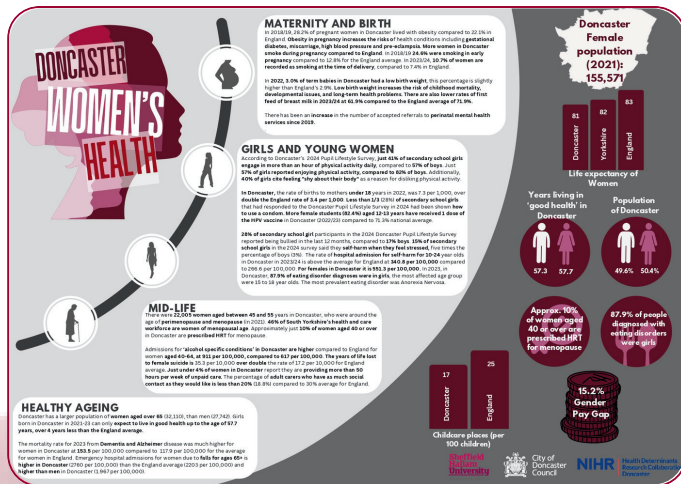


NHS England recommends that Women's Health Hubs should:

- Reduce health inequalities
- Increase agency to manage and improve own wellbeing
- Connect communities making use of wider public services including those provided by the Voluntary, Community, Faith sector

The Doncaster Women's Health Report and Infographic (2025) identified multiple unmet needs for Women's Health in Doncaster. In response to this and as part of a neighbourhood health prototype, Be Well Doncaster have been delivering a Women's Wellbeing approach where local events are delivered to gain enthusiasm and community involvement, sparking community-led, co-produced Women's Wellbeing Hubs in each locality of Doncaster.

Adwick and Carcroft was selected as the first location to host this project due to the area having the lowest life expectancy (78.1 years) and healthy life expectancy (57.5) for women in Doncaster.



Women's Wellbeing Day Carcroft: September 2025

The event brought together healthcare professionals, local voluntary, community and faith sector groups and organisations specialising in Women's Health & Wellbeing in a welcoming and comfortable environment. A key focus of the event was to create a supportive and empowering network for women in the local area. The event showcased support and services in the local area, allowed access to health care professionals and offered wellbeing activities throughout the day.

Co-Production and Ongoing Engagement

Both the event and the hubs had co-production at the heart of planning. A pre-event survey was created so that insights would be gathered directly from local residents. 135 responses were gathered in total, and this feedback played a central role in shaping the event's content and structure, ensuring it was both relevant and meaningful to attendees. A further, post-event feedback survey ensured learnings could be taken forward to future events in different localities, and gauged interest in themes and activities for regular Women's Hubs in Carcroft.

At both stages, residents and partners could sign up to be part of a steering group which would help to shape the hubs going forwards.

Event highlights

40
Hours of talks and activities were delivered

Topics included: Menopause, Mental Health, Nutrition, Aromatherapy etc

208
People attended on the day

134 women from the local area
74 staff members from organisations or volunteers

191
Resident attendees so far

Across 14 Hubs between December 2025 and June 2026

18
Partner organisations have supported with the hubs

Including: Primary Care Doncaster, Public Health, RDaSH, DBTH, General Practitioners, VCFS and others

16
Women had a Health Checks on the day by Randox

These were both 'walk ins' and bookable appointments

32
Organisations were represented on the day

This included: Primary Care Doncaster, Public Health, RDaSH, DBTH, General Practitioners, VCFS and others

8
Women had walk on cervical screening tests by 'Vinnie' the Primary Care Doncaster Van

During our Cancer themed Hub

7
Health Themes Discussed so far

Including: Emotional Wellbeing, Compassionate Approach to Weight, Cancer, Diabetes, Moving Well with Pain and Mental Wellbeing

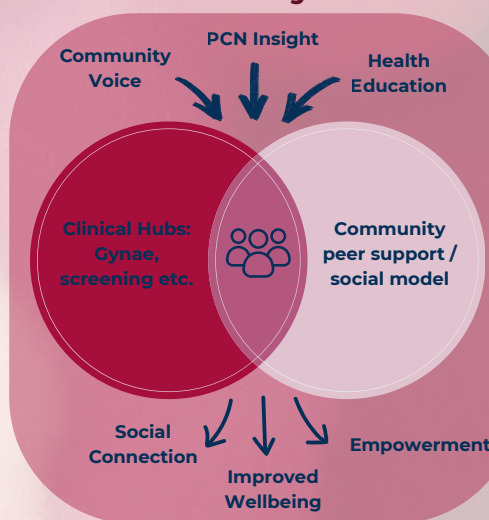
Women's Wellbeing Hubs

Using the Appreciative Inquiry 4D Model (Umbrex, 2024), residents and partners worked together in a steering group to Discover, Dream, Design Deliver new, accessible ways for women to engage with healthcare. The first steering group hosted 16 residents and partners to co-design the hubs.

The group reviewed community feedback and established a timetable of visiting medical professionals in partnership with local Primary Care Networks, alongside a programme of monthly health themes such as mental health, compassionate approaches to weight, and cancer awareness. Clinical services such as health checks and cervical screening have also been provided.

Carcroft now hosts two Women's Wellbeing Hubs a month, with a different guest speaker or activity each session. Residents and partners engage directly with Primary Care to shape themes, and for primary care to informally refer residents to attend.

Women's Wellbeing Hubs Model



"Empower women, reduce appointments, improve outcomes."

Keep up to date on our website:



Kate Maguire
Katherine.Maguire@doncaster.gov.uk
Public Health Improvement Officer



Bethany Hayes
Bethany.Hayes@doncaster.gov.uk
Public Health Improvement Officer